

## Recombinant Human ATAD2B (aa 952-1086)

### DESCRIPTION

**Protein name:** ATPase family AAA domain-containing protein 2B

**Uniprot-ID:** Q9ULI0

**Origin:** Human

**Source:** *Escherichia coli*

**Synonyms:** KIAA1240

**Tag:** Tag free

**Grade:** Crystallography grade (crystallized *in house*)

**Product Description:** Recombinant ATAD2B (human) was produced in *Escherichia coli*. The expressed protein with an N-terminal cleavable poly His-tag was purified by a chromatographic procedure comprising an affinity purification, tag removal and size exclusion chromatography (as described previously <sup>(1)</sup>).

### SPECIFICATION

**Storage Buffer:** 20 mM HEPES, 500 mM NaCl, 5 % glycerol, 2 mM DTT, pH 7.5

**Purity:** >90 % as determined by SDS-PAGE

**Molecular weight:** 15.8 kDa

**Construct:** ATAD2B (M952-G1086)

**Sequence:**

SMEDQEENTLRELRLFLRDVTKRLATDKRFNIFSKPVDIEEVSDYLEVIK  
EPMDLSTVITKIDKHNYLTAKDFLKDIDLICSNALYNPDKDPGDKIIRH  
RACKLKDTAHAIIAAELDPEFNKLCEEIKEARIKRG

**REFERENCE:** (1) Filippakopoulos P., Cell 149, 214-231, 2012

**STORAGE:** Product shipped in dry ice and should be stored at -80 °C. Thaw rapidly and store on ice during use. Avoid repeated freeze-thaw cycles.  
 FOR RESEARCH USE ONLY. NOT FOR DIAGNOSTIC OR THERAPEUTIC USE.

## QUALITY CONTROL

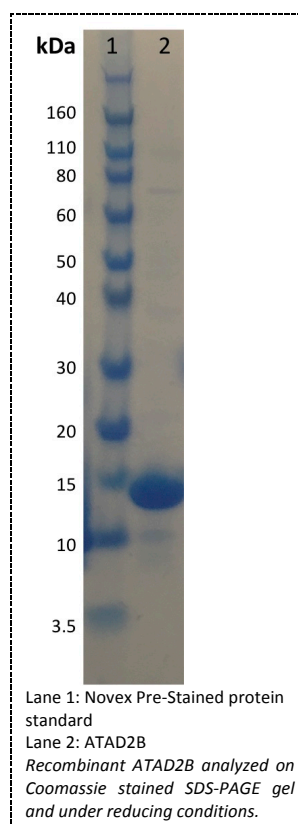
The quality of the protein was assessed by:

**Size exclusion chromatography:** No aggregation

**Mass spectrometry characterization:** 15.8 kDa

**Differential scanning fluorimetry (T<sub>m</sub>):** 55 ± 0.4 °C

**SDS-PAGE:** >90% purity



**Protein crystals:**

